



bedford
COLLECTIONS



2017 FALL/WINTER COLLECTIONS



Silver
Kenya Lumbar Pillow

Smoke
Quincy

GREETINGS!

When I was growing up, Levi's jeans used the tagline "Quality never goes out of style."

I believe that's still true today. At least it's still true at Bedford, where our high quality products are made the old fashioned way, in a century-old mill in New Hampshire.

I am fortunate to have expert craftsmen – and women – who have worked for us, and for you, for many years. They only know how to do things one way – the right way. Their work ethic, skills, and experience are evident in every piece we make.

Bedford Collections is a family business. On behalf of all of us, I appreciate your support and the opportunity you provide for us to do something we love.

Warm regards,
Richard Sherman
President

Mermaid
Cable Knit

TABLE OF CONTENTS

COTTAGE COLLECTION		KENNEBUNK HOME COLLECTION		ACCESSORIES COLLECTION	
Arctic	6	➤ Cable Knit	18	Arctic Pillow	38
Eskimo	6	Camelot	20	Eskimo Pillow	38
Gateway	7	Campbell	22	Giddy Up Pillow	38
Giddy Up	7	Canyon	24	Hampton Pillow	39
Hampton	8	Chesapeake	25	➤ Kenya Pillow	39
Hanover	9	Dover	26	Rose Petal Pillow	40
➤ Kenya	10	Filigree	27	Siberia Pillow	41
Medallion	10	Greenwich	28	➤ Yukon Pillow	41
Rose Petal	11	Middlebury	29	Giddy Up Scarf	42
Seascape	12	➤ Mystic	29	Rose Petal Scarf	42
Siberia	12	Newcastle	30	➤ Serene Scarf	43
Snuggle		Ombre	30	Valencia Scarf	43
Baby Blanket	13	➤ Portland	31	Pacifica Wrap	44
Starfish	13	➤ Quincy	31	Sonoma Wrap	44
Woodland	14	Serene	32	Spa Robe	45
➤ Yukon	14	Stria	33		
Zephyr	15	➤ Sturbridge	34		

➤ New

www.bedfordcollections.com

tel. 800-242-1537
fax. 800-462-2680

email: customerservice@bedfordcottage.com



Blue Spruce
Woodland

Pear
Zephyr

Mist
Rose Petal

COTTAGE
COLLECTION

ARCTIC

For matching Pillows, see p.38



Caramel
285-427



Cream
285-006



Espresso
285-205

Imported

50" x 60" • Dry Clean Only • Fur: 85% Acrylic 15% Polyester | Back: 100% Polyester

ESKIMO

For matching Pillow, see p.38



Brown
190-012

Imported

50" x 60" • Dry Clean Only • Fur: 55% Acrylic 45% Polyester | Back: 100% Polyester

GATEWAY



Imported

Steel
274-348

45" x 67" • Machine Wash & Dry or Dry Clean • 75% Rayon from Bamboo 25% Polyester



Stone
274-137

GIDDY UP

For matching Pillow, see p.38



Imported

Ivory
171-043

50" x 60" • Machine Wash & Dry or Dry Clean • 100% Polyester

HAMPTON

For matching Pillows, see p.39



Aqua
111-398

Imported

50" x 60" • Hand Wash Cold, Lay Flat to Dry • 85% Acrylic 15% Wool



Celery
111-062



Oyster
111-078



Mist
111-023



Shearling
111-316

HANOVER



Imported

Red
192-018

45" x 70" • Hand Wash Cold, Lay Flat to Dry • 95% Acrylic 5% Polyester



Deco
192-239



Multi
192-012



Waterlilly
192-366

KENYA

NEW

For matching Pillows, see p.39



Silver
296-254

Imported

50" x 60" • Dry Clean Only • Fur: 100% Acrylic | Back: 100% Polyester

MEDALLION



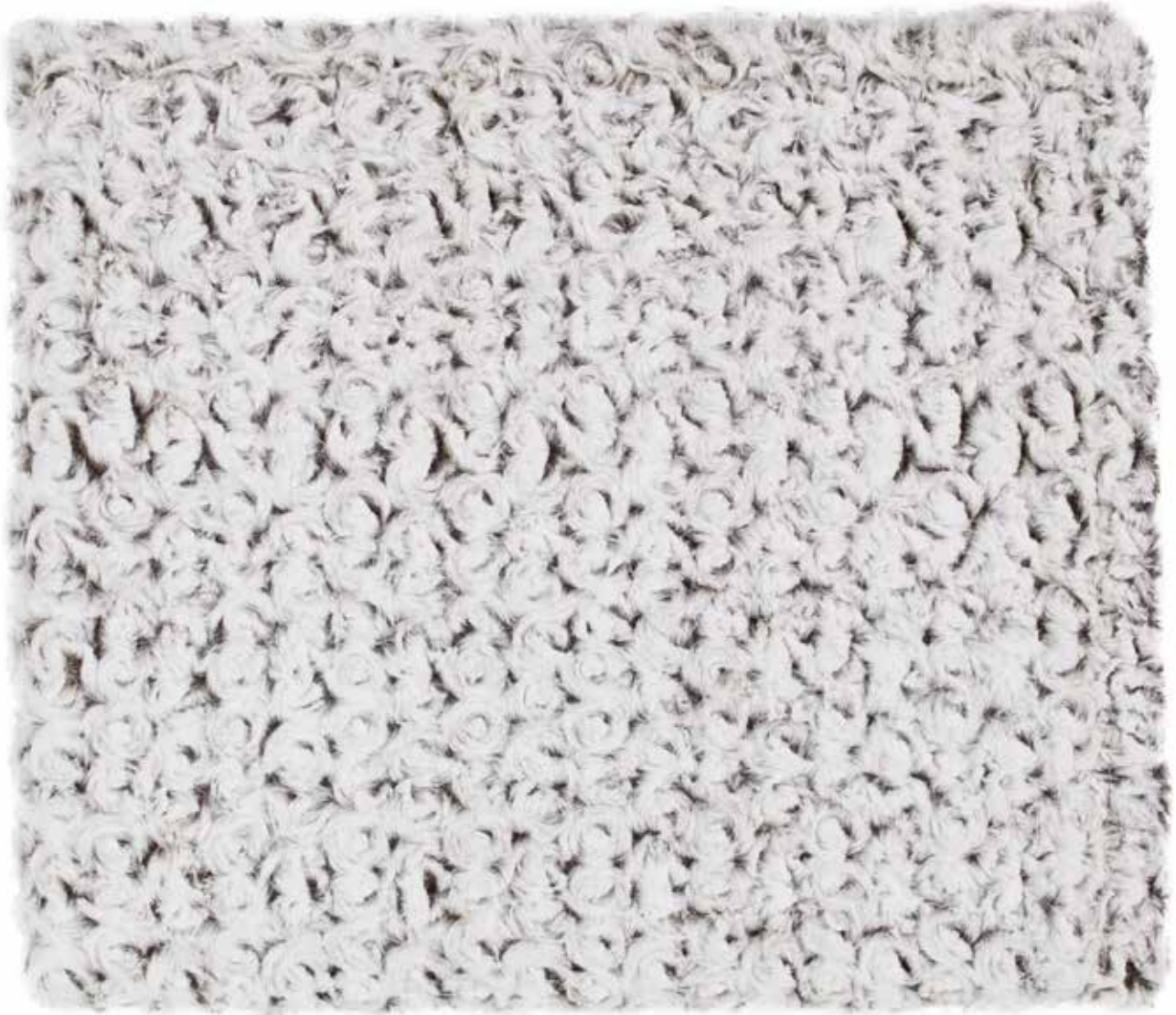
Black
286-115

Imported

45" x 67" • Machine Wash & Dry or Dry Clean • 75% Rayon from Bamboo 25% Polyester

ROSE PETAL

For matching Pillows, see p.40



Imported

Cream
174-006

50" x 60" • Dry Clean Only • 100% Polyester



Beige
174-321



Frost
174-334



Bronze
174-360

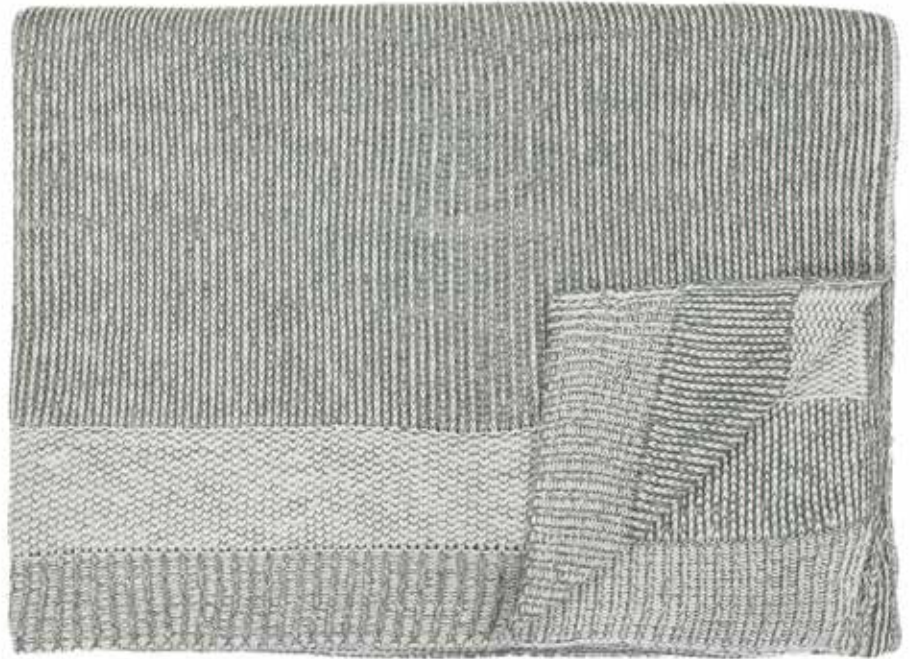


Mist
174-023

SEASCAPE



Mist
271-023



Storm
271-094

Imported

45" x 67" • Machine Wash & Dry • 100% Acrylic

SIBERIA

For matching Pillows, see p.41



Ivory
299-043

Imported

50" x 60" • Dry Clean Only • Fur: 85% Acrylic 15% Polyester | Back: 100% Polyester

SNUGGLE BABY BLANKET



Imported

Blue
261-084

30" x 40" • Machine Wash & Dry • 100% Cotton



Pink
261-031

STARFISH



Imported

Sand
281-216

45" x 67" • Machine Wash & Dry or Dry Clean • 75% Rayon from Bamboo 25% Polyester



Sea Coral
281-377

WOODLAND



Blue Spruce
287-259



Oak
287-426

Imported

45" x 67" • Machine Wash & Dry or Dry Clean • 75% Rayon from Bamboo 25% Polyester

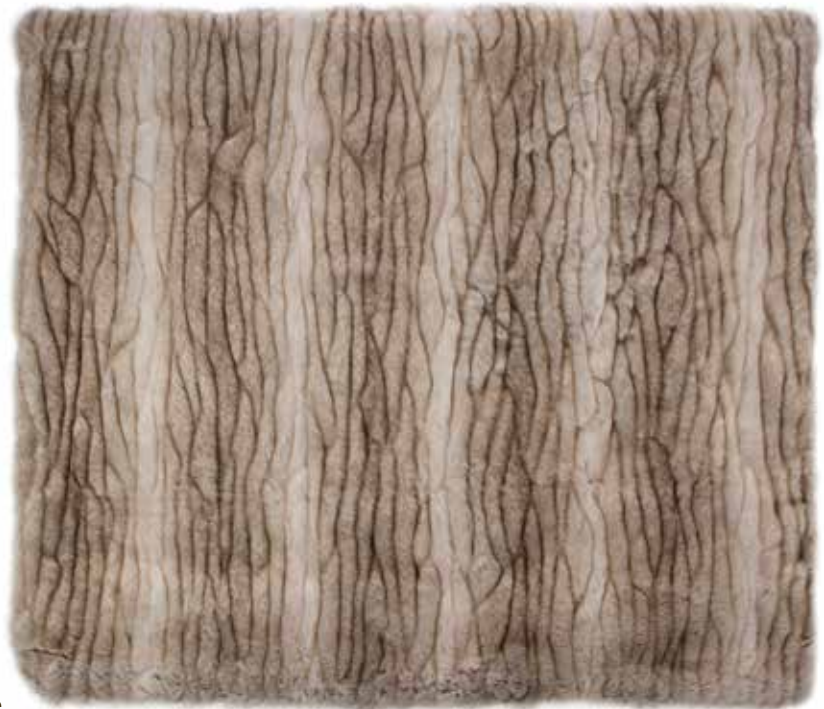
YUKON

NEW

For matching Pillows, see p.41



Java
297-201



Latte
297-281

Imported

50" x 60" • Dry Clean Only • Fur: 100% Acrylic | Back: 100% Polyester

ZEPHYR



Imported

Pear
223-303

50" x 70" • Hand Wash Cold, Lay Flat to Dry • 100% Acrylic



Capri
223-280



Silver
223-254



Rose
Greenwich

Wine
Filigree



Berry
Stria



KENNEBUNK HOME

COLLECTION



HOW IT'S MADE

We are always looking to create, or source, something unique and it all begins with interesting novelty yarns. Like a musician crafting a song, we then take snippets of yarn to create small samples (10 inch squares) that will reflect different weave and color possibilities.

EXPLORING THE WORLD TO BRING COLOR TO YOURS.

Members of our design team travel the globe to attend shows - about textiles, bedding, art, flowers – anything that can help us spot trends in colors. These insights help form the inspirations for our new styles, as well as new colors for existing styles, so we can help you capitalize on what's hot now.

TAKE US INTO WARP, MR. SULU!

(Rob, one of our design experts is a huge Star Trek fan)

Once we've selected the yarn colors and patterns, and have lots and lots of yarn on hand, the next step in the process is to create the warp – these are the yarns that will run through the throw vertically. The warp is comprised of 150 or more cones of yarn, each one hand tied onto the beam, forming the warp. Think of a giant wagon wheel with yarn in a multitude of colors around it – that's pretty much what the warp looks like.



WHAT'S IN A NAME?

Sometimes the inspiration behind our style and color names is obvious (Eskimo, Seascape, Cable Knit). Yet one of our best sellers, the Campbell, is both among our most enduring – and endearing.

That's because it is named after the father of Warren Campbell Jr., who began working at the factory in 1968. His son, (Warren the 3rd) joined us in 2007 and now heads production, and his son, Warren the 4th, joined us this year! Not to be overlooked is Leon Campbell, Warren (the 3rd's) brother, who joined our team in 2008. That's truly a team effort!



FROM WARP TO WEAVE – THE OLD-WORLD WAY.

Once the warp is created it is moved to one of two types of looms – each of which must be hand programmed using state-of-the-art (from the depression era) technology (punch cards or roller chains). The warp is carefully hand tied onto the loom, one end at a time. Yes, there are faster ways to produce throws, but none that enable us to produce better results. And to us, better is all that matters.

OUR “HAND”-IWORK ALSO REQUIRES AN EYE FOR DETAIL.

Every throw we make passes through hyper-critical reviews by Irene, Linh, Lan, and many other members of our team. The inspections begin when the throws come off the loom, when they are cut and folded, when they are steamed (to seal the yarn) and dried, and a final inspection before the throw is folded and our label is applied.

IT'S A WRAP! (OR A THROW, SCARF, ROBE...)

The final steps in our process are packing and shipping – and they're important ones. Often we have deadlines to meet, so it is not uncommon for everyone, from all the Campbell family members, to the company owner (me), to pitch in.

We have been manufacturing this way for decades – is it any wonder that so many of our throws are timeless classics? And of course, we could not do what we love if it wasn't for you. We thank you for bringing us into your stores and your homes, and for the important role you play in our story.



NEW

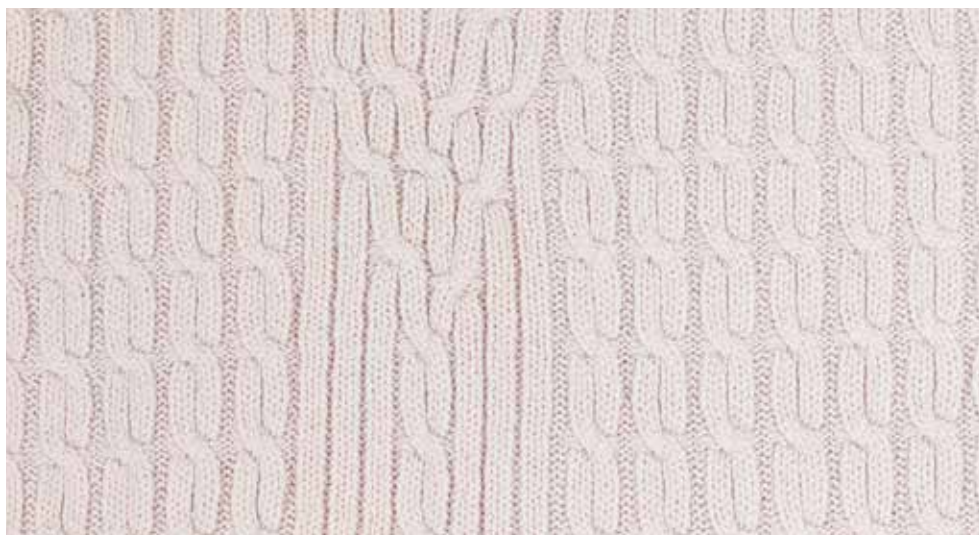
CABLE KNIT

SUITABLE FOR INDOOR & OUTDOOR USE



Graphite
294-098

50" x 70" • Machine Wash & Dry • 100% MaxLuxe Polypropylene



Ivory
294-043



Mermaid
294-386



Sable
294-119

 MADE IN THE USA

CAMELOT



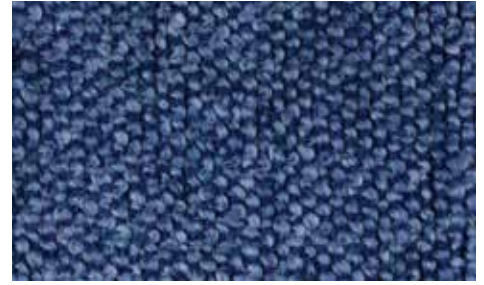
Apple
052-038

 MADE IN SUNCOOK, NH

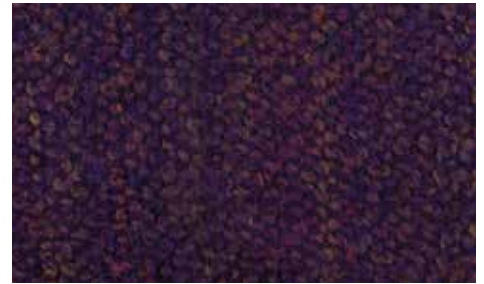
40" x 70" • Hand Wash Cold, Lay Flat to Dry • 84% Acrylic 16% Polyester



Dark Moss
052-283



Denim
052-026



Eggplant
052-169



Autumnal
052-015



Bermuda
052-083



Fossil
052-367



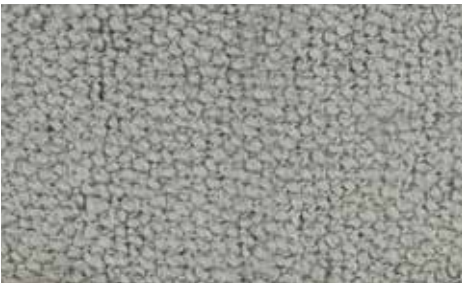
Banana
052-013



Cream
052-006



Granite
052-233



Grey
052-050



Mandarin
052-110



Red
052-018



Indigo
052-146



Mango
052-208



Sapphire Blue
052-149



Iris
052-304



Mist
052-023



Sour Apple
052-104



Lagoon
052-102



Linen
052-010



Petal
052-199

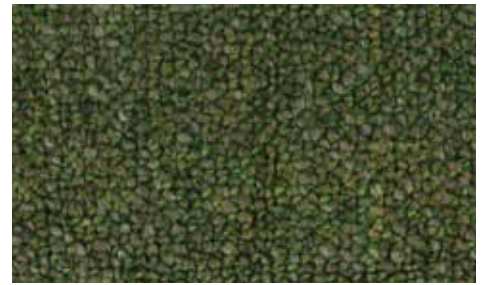
CAMPBELL



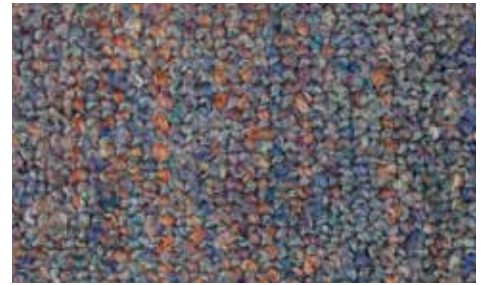
Aqua
311-398

 MADE IN SUNCOOK, NH

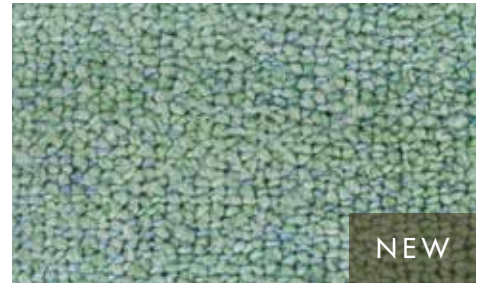
40" x 70" • Hand Wash Cold, Lay Flat to Dry • 91% Acrylic 9% Polyester



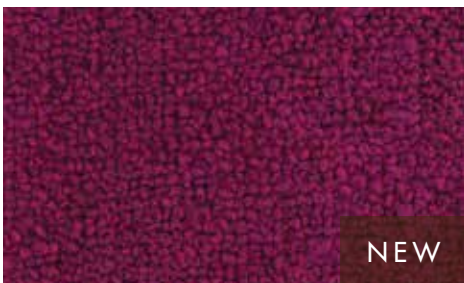
Forest
311-151



Heather
311-011



Jade
311-062



Azalea
311-353



Charcoal
311-225



Meadow
311-044



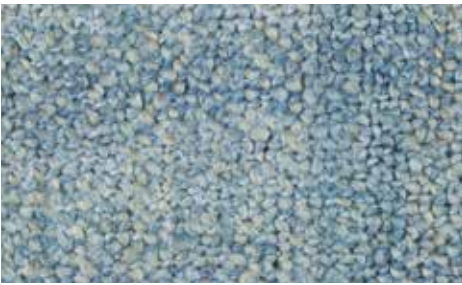
Bristol Blue
311-390



Citrine
311-136



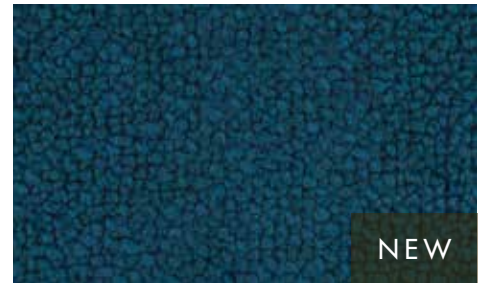
Midnight
311-004



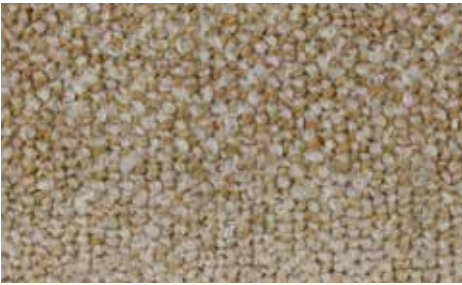
Mirage
311-376



Scarlet
311-287



Teal
311-278



Oatmeal
311-113



Seamist
311-191



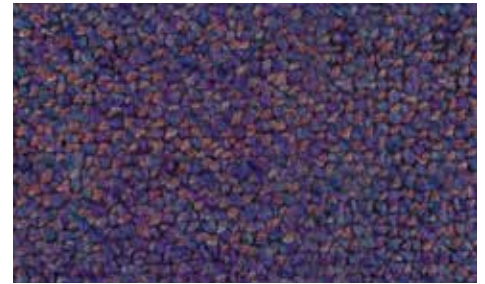
Tidal
311-381



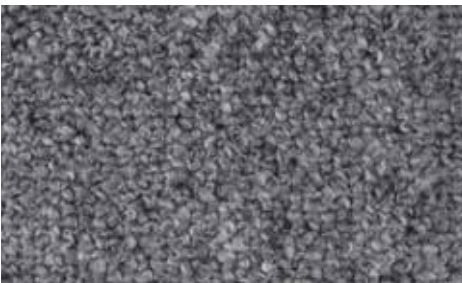
Patina
311-076



Spice
311-270



Violet
311-142



Platinum
311-292



Rose
311-249



Stone
311-137

CANYON



Baltic
173-200

 MADE IN SUNCOOK, NH

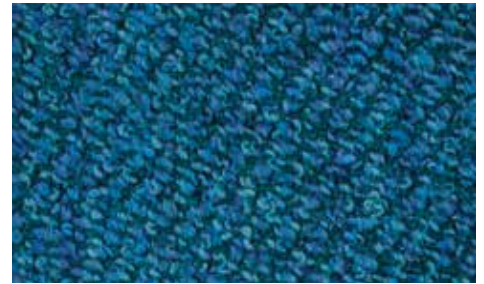
45" x 72" • Hand Wash Cold, Lay Flat to Dry • 88% Acrylic 12% Polyester



Linen
173-010



Mist
173-023



Peacock
173-197



Butterscotch
173-359



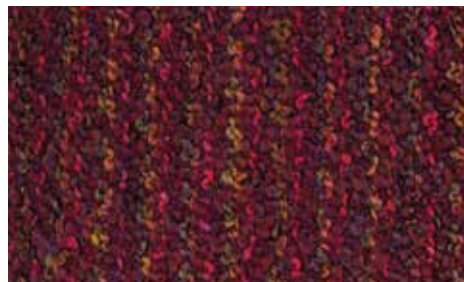
Eggshell
173-221



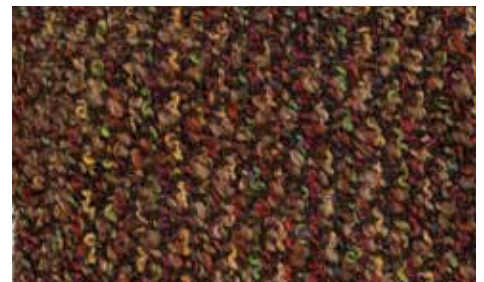
Pear
173-303



Driftwood
173-056

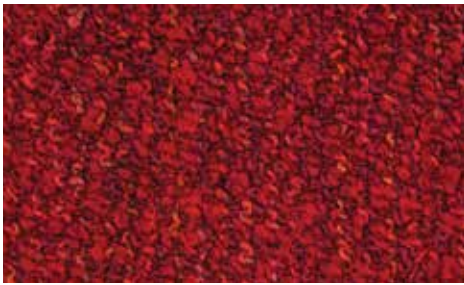


Garnet
173-082

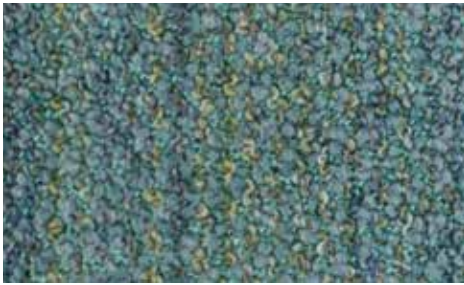


Prairie
173-222

CHESAPEAKE



Scarlet
173-287



Seafoam
173-224



Sierra
173-066



Silver
173-254



Spice
173-270



 MADE IN SUNCOOK, NH

Portabello
252-293

45" x 70" • Hand Wash Cold, Lay Flat to Dry • 95% Acrylic 5% Polyester



Earthtone
252-021



Seamist
252-191

DOVER



Harvest
260-138

 MADE IN SUNCOOK, NH

45" x 70" • Hand Wash Cold, Lay Flat to Dry • 98% Acrylic 2% Polyester



Patina
260-076



Storm
260-094



Platinum
260-292



Thistle
260-117

FILIGREE



 MADE IN SUNCOOK, NH

Pewter
291-144

45" x 70" • Hand Wash Cold, Lay Flat to Dry • 95% Acrylic 5% Polyester



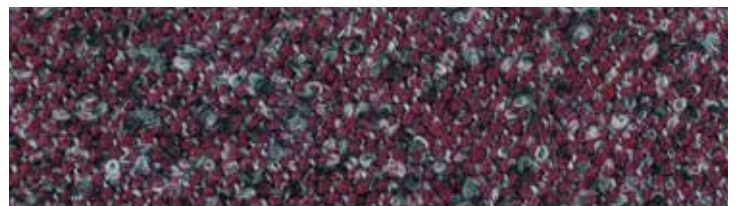
Aqua
291-398



Sunflower
291-069



Olive
291-103



Wine
291-230

GREENWICH



Aqua
284-398

 MADE IN SUNCOOK, NH

40" x 70" • Hand Wash Cold, Lay Flat to Dry • 91% Acrylic 9% Polyester



Linen
284-010



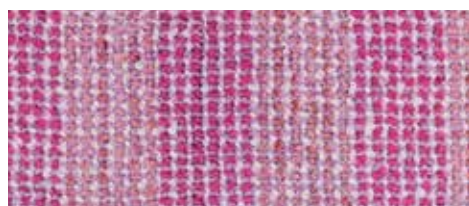
Purple
284-053



Sage
284-087



Maize
284-024



Rose
284-249



Smoke
284-236

MIDDLEBURY



 MADE IN SUNCOOK, NH

Platinum
266-292

45" x 70" • Hand Wash Cold, Lay Flat to Dry • 98% Acrylic 2% Polyester

NEW

MYSTIC



 MADE IN SUNCOOK, NH

Flannel
293-122

50" x 70" • Hand Wash Cold, Lay Flat to Dry • 95% Acrylic 5% Polyester



Ivory
293-043

NEWCASTLE



Platinum
257-292

 MADE IN SUNCOOK, NH

45" x 70" • Hand Wash Cold, Lay Flat to Dry • 95% Acrylic 5% Polyester



Bark
202-334



Blue
202-084



Driftwood
202-056



Oyster
202-078



Platinum
202-292



Russet
202-108



Smoke
202-236

OMBRE



Almond
202-001

 MADE IN SUNCOOK, NH

45" x 72" • Hand Wash Cold, Lay Flat to Dry • 88% Acrylic 12% Polyester

NEW

PORTLAND



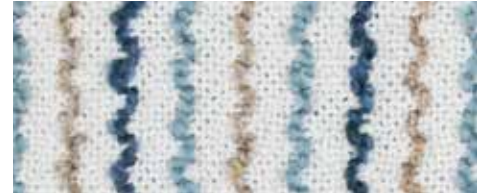
 MADE IN SUNCOOK, NH

Amber
300-027

45" x 70" • Hand Wash Cold, Lay Flat to Dry • 95% Acrylic 5% Polyester



Charcoal
300-225



Driftwood
300-056



Jasper
300-074

NEW

QUINCY



 MADE IN SUNCOOK, NH

Apple
301-038

45" x 70" • Hand Wash Cold, Lay Flat to Dry
95% Acrylic 5% Polyester



Camel
301-059



Ginger
301-238



Denim
301-026



Smoke
301-236

SERENE



Charcoal
288-225

 MADE IN SUNCOOK, NH

45" x 70" • Hand Wash Cold, Lay Flat to Dry • 95% Acrylic 5% Polyester



Cocoa
288-128



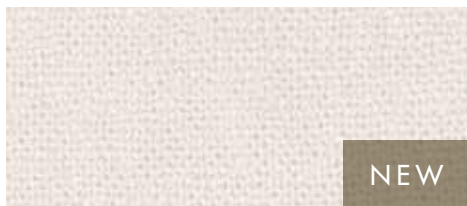
Moonstone
288-241



Scarlet
288-287



Ivory
288-043



Natural
288-111



Waterfall
288-184

STRIA



 MADE IN SUNCOOK, NH

Harvest
204-138

40" x 70" • Hand Wash Cold, Lay Flat to Dry • 91% Acrylic 9% Polyester



Pear
204-303



Russet
204-108



Seaglass
204-091



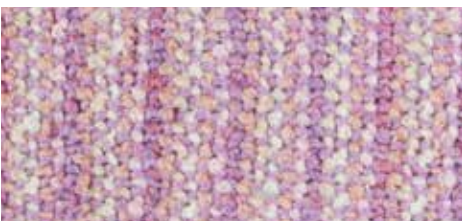
Berry
204-034



Leaf
204-231



Sherbet
204-039



Blossom
204-403



Paprika
204-168



Stone
204-137



Frost
204-344



Peacock
204-197



Waterfall
204-184

NEW

STURBRIDGE



Charcoal
292-225

45" x 70" • Hand Wash Cold, Lay Flat to Dry • 88% Acrylic 12% Polyester



Atlantic
292-378



Hazelnut
292-272



Autumnal
292-015



Linen
292-010



Flannel
292-122



Moonstone
292-241

 MADE IN SUNCOOK, NH



Latte
Yukon Pillow

Oyster
Hampton Pillow

Beige
Rose Petal Pillow



Cream
Arctic Pillow

Ivory
Siberia Pillow

Beige
Rose Petal Scarf

ACCESSORIES COLLECTION

ARCTIC PILLOW

For matching Throws, see p.6



Caramel
8285-427-PI



Cream
8285-006-PI



Espresso
8285-205-PI

Imported

20" x 20" • Dry Clean Only • 85% Acrylic 15% Polyester

ESKIMO PILLOW

For matching Throw, see p.6



Brown
8190-012-PI

Imported

20" x 20" • Dry Clean Only
Fur: 55% Acrylic 45% Polyester | Back: 100% Polyester

GIDDY UP PILLOW

For matching Throw, see p.7



Ivory
8171-043-PI

Imported

20" x 20" • Hand Wash Cold, Lay Flat to Dry or Dry Clean
100% Polyester

HAMPTON PILLOW

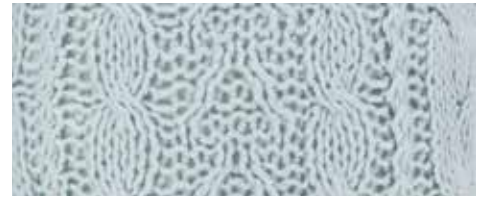
For matching Throws, see p.8



Imported

Celery
8111-062-PI

20" x 20" • Hand Wash Cold, Lay Flat to Dry • 85% Acrylic 15% Wool



Mist
8111-023-PI



Oyster
8111-078-PI



Shearling
8111-316-PI

NEW

KENYA PILLOWS

For matching Throw, see p.10



Silver
8296-254-PI

Silver Lumbar
8296-254-LU

20" x 20" (Square) | 12" x 20" (Lumbar) • Dry Clean Only • 100% Acrylic • Imported

ROSE PETAL PILLOW

For matching Throws, see p.11



Beige
8174-321-PI

Imported

20" x 20" • Dry Clean Only • 100% Polyester



Bronze
8174-360-PI



Frost
8174-334-PI



Cream
8174-006-PI



Mist
8174-023-PI

SIBERIA PILLOWS

For matching Throw, see p.12



Ivory
8299-043-PI

Ivory Lumbar
8299-043-LU

20" x 20" (Square) | 12" x 20" (Lumbar) • Dry Clean Only • 85% Acrylic 15% Polyester • Imported

NEW

YUKON PILLOW

For matching Throws, see p.14



Imported

Java
8297-201-PI



Latte
8297-281-PI

20" x 20" • Dry Clean Only • 100% Acrylic

GIDDY UP SCARF



Ivory
7171-043-SC

Imported

6" x 70" • Machine Wash & Dry • 100% Polyester

ROSE PETAL SCARF



Beige
7174-321-SC



Bronze
7174-360-SC

Imported

6" x 70" • Dry Clean Only • 100% Polyester

NEW

SERENE SCARF



7.5" x 80" • Hand Wash Cold, Lay Flat to Dry • 95% Acrylic 5% Polyester



Cocoa
7288-128-SC



Moonstone
7288-241-SC



Scarlet
7288-287-SC

VALENCIA SCARF



15" x 70" • Machine Wash & Dry • 100% Acrylic



Denim
7247-026-SC



Salsa
7247-130-SC

PACIFICA WRAP



Black
5002-115

Imported

56" x 68" • Machine Wash & Dry or Dry Clean • 100% Polyester

SONOMA WRAP



Black
5001-115

Imported

56" x 68" • Machine Wash & Dry or Dry Clean • 100% Polyester

SPA ROBE



Imported

White
475-126



Blue
475-084



Dove
475-342



Pink
475-031

One Size • Machine Wash & Dry • 100% Polyester

To order by phone, call 1-800-242-1537 47



Comfort, style, and warmth for every room in your home.

TERMS & CONDITIONS

- All prices are wholesale and subject to change without notice. FOB: Suncook, New Hampshire.
- New Account: minimum opening orders must be 10 throws or \$350.
- Minimum reorders are 5 throws or \$150. Reorders less than \$150.00 or 5 throws will be assessed a \$15.00 handling fee.
- Terms are Net 30 upon customer credit approval. Trade and credit references required. Credit card required on first order.
- Orders may also be shipped with Visa, MasterCard, American Express, Discover or check (no COD). All funds must be in U.S. currency.
- All merchandise should be inspected upon receipt. Return requests for defective merchandise or factory error are to be made within 30 days of invoice. No returns will be accepted without prior return authorization.
- Although every effort was made to reproduce colors closely, actual colors may vary and sizes are approximate.
- Styles and colors become discontinued from time to time. Call customer service to check availability.
- Shipping availability is normally 7-10 days on in-stock items. Backorders over 90 days, less than \$50 or 1 remaining backordered item, may be cancelled.
- Customers may cancel an order up to 14 days prior to ship date without a penalty. Cancellations or orders less than 14 day shipping window may be charged a 20% service fee.

Chris Roberts

Blanket the World / Bedford Collections

545 Commerce St

Franklin Lakes, NJ 07417

P: 201-825-6647 | F: 201-603-6537 | C: 201-805-0882

e: chris@blankettheworld.com | e: croberts@bedfordcollections.com

with any questions, or pricing for the promotional products industry

